

Eurotel ET32NF | ET32NF•36NF•38NF•40NF

The Eurotel NF range from Versalift is the UK's market leading van and chassis mounted access platform. With a low weight to maximise load carrying capacity and compact dimensions thanks to versatile telescopic, plus flyboom configuration. It is the perfect partner for today's latest generation of light commercial vehicles.

Eurotel's are currently in use with most of the worlds leading contractors, utilities and rental companies so you can be confident of a proven, reliable service and an after sales support that is second to none.

Specialist applications of Eurotel models on Daimler Chrysler Unimogs and also Fourtec UK's Bremach Extreme, offering 4 x 4 full off road capacity. All platforms feature a one year parts and labour warranty, with a three year extended warranty and a range of Repair and Maintenance contracts available at extra cost.

Versalift offers extensive customer support - pre sales help and advice and demonstrator units. Full after sales service and spare parts. are usually available within 24hrs. Product service training and IPAF operator courses are also available.



Eurotel ET32NF | ET32NF • 36NF • 38NF • 40NF



Ready to Go vans (RTG) often in stock, please enquire.



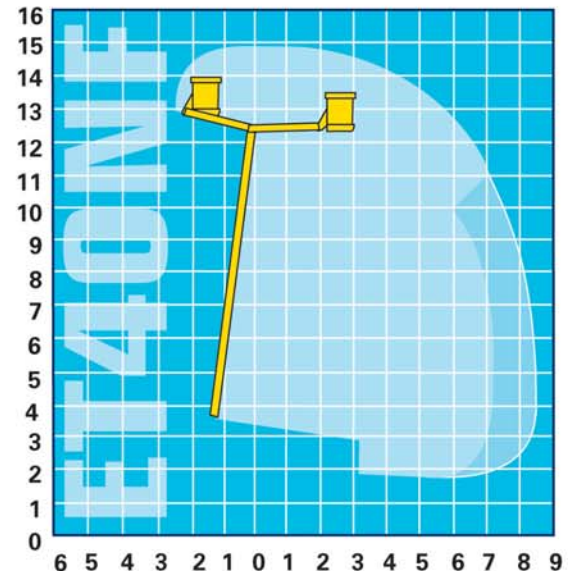
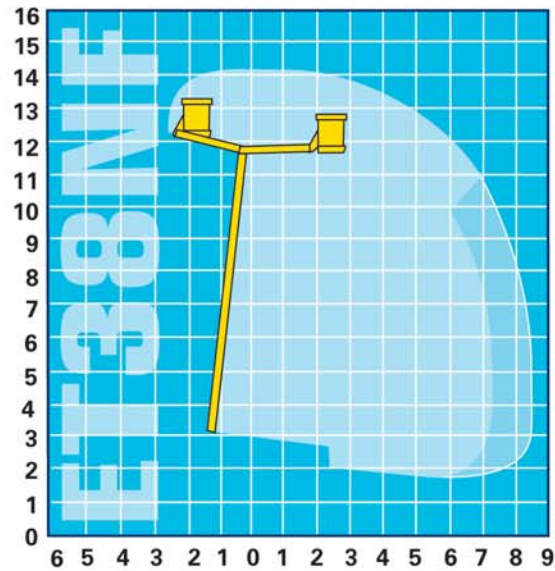
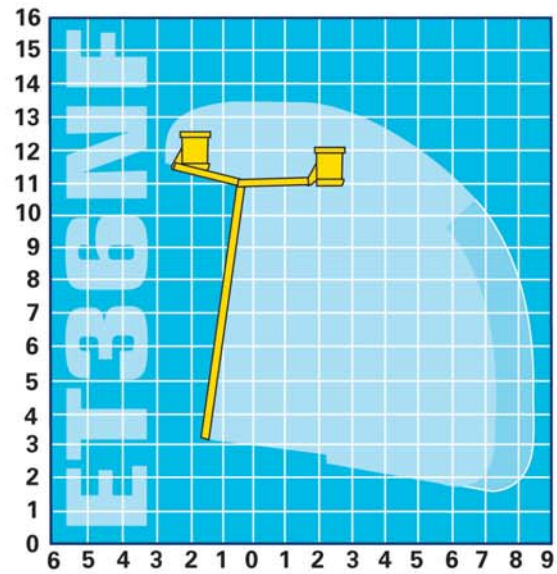
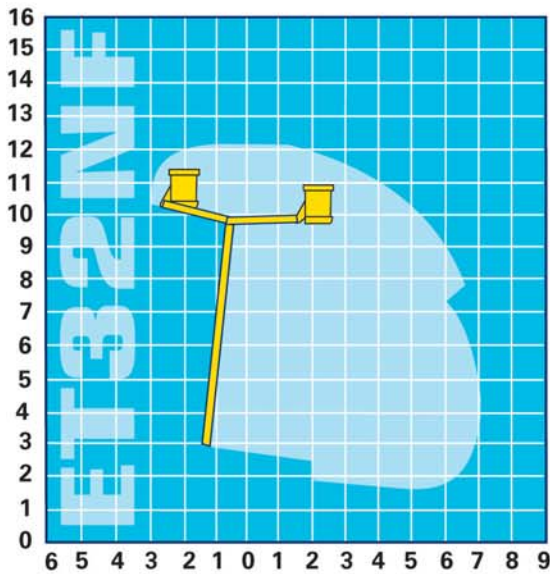
features & benefits

Lightweight platforms for greater spare payload
 Greater van payload
 ET36NF achieves up to 1000kg spare payload on 4.6 tonne GVW
 ET36NF achieves up to 1400kg spare payload on 5.2 tonne GVW
 ET38NF achieves up to 670kg spare payload on 4.6 tonne GVW
 ET38NF achieves up to 1300kg spare payload on 5.2 tonne GVW
 ET40NF achieves up to 1200kg spare payload on 5.2 tonne GVW
 Full platform function emergency power
 Emergency stop at platform and pedestal

Full functions at ground on 5m wander lead
 Aluminium inner telescopic boom
 Steel outer boom and pedestal
 Van or truck mount
 Extended outreach pack ads up to 1m with 120kg SWL
 Critical fasteners are torqued and sealed
 Twin proportional joystick option



Eurotel ET32NF | ET32NF•36NF•38NF•40NF



specifications

	ET32NF	ET36NF	ET38NF	ET40NF
max. working height	12.2m	13.2m	14.2m	15.0m
max. platform height	10.2m	11.2m	12.2m	13.0m
horizontal outreach@200kgSWL	7.1m	7.3m	7.3m	7.3m
horizontal outreach@120kgSWL	n/a	8.4m	8.4m	8.4m
fly boom	110° standard / 180° option			
non continuous rotation	>360°	>360°	>360°	>360°
boom travel	-7° to 80°	-7° to 80°	-7° to 80°	-7° to 80°
min. GVW	4.6t	4.6t	4.6t	4.6t

Please note that SWL, material handling capabilities, outreach and working height vary according to specification of platform and base vehicle. Above figures are intended as best guide only.
Versalift is certified to ISO9001: 2000 by TUV UK Quality Assurance Ltd; certificate number GB00468.

All dimensions in metres

- Reach of ET32/36/38/40NF (1 man)
- Reach of ET32/36/38/40NF (2 man)

